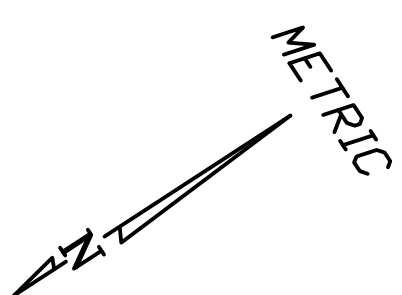


PLAN NO. 11
 DEPOSIT 382/12 W.L.T.O.



PROPOSED PLAN OF SUBDIVISION
 OF PART OF
 R.L. 111
 PARISH OF ST. PAUL
 BEING
 ALL OF LOT 1 DEPOSIT 382/12 W.L.T.O.
 R.M. OF EAST ST. PAUL
 MANITOBA

SCALE:	1:1000
DATE:	SEPT 24, 2012
DRAWN BY:	J.G.W.
CHECK BY:	J.G.W.
FILE NO.:	JFN.
FILE NAME:	J.G. WAITING M.L.S., C.L.S.
OFN\JIM\PROPOSED SUB12700 HENDERSON PROPOSAL.DWG	

red river

238.12'

40'
outfall
caveat

121'-4 1/2"

239.9'

235.6'

55'-0 1/2"

55'-0 1/2"

2500 sf plan

2500 sf plan

26 x 24 garage

26 x 24 garage

45' setback

10'

10'

45' setback

LOT 3

LOT 4

82.1'

20'
outfall
caveat

94.2'

Mariners Way

2700
Henderson
Highway

S1

red river

238.12'

40'
outfall
caveat

83'-8 1/2"

52'-11 1/2"

2500 sf plan

88'-0"

10'

24 x 36 garage

45' setback

LOT 4

20'
outfall
caveat

94.2'

239.9'

2500 sf plan

10'

10'

26 x 24 garage

45' setback

LOT 3

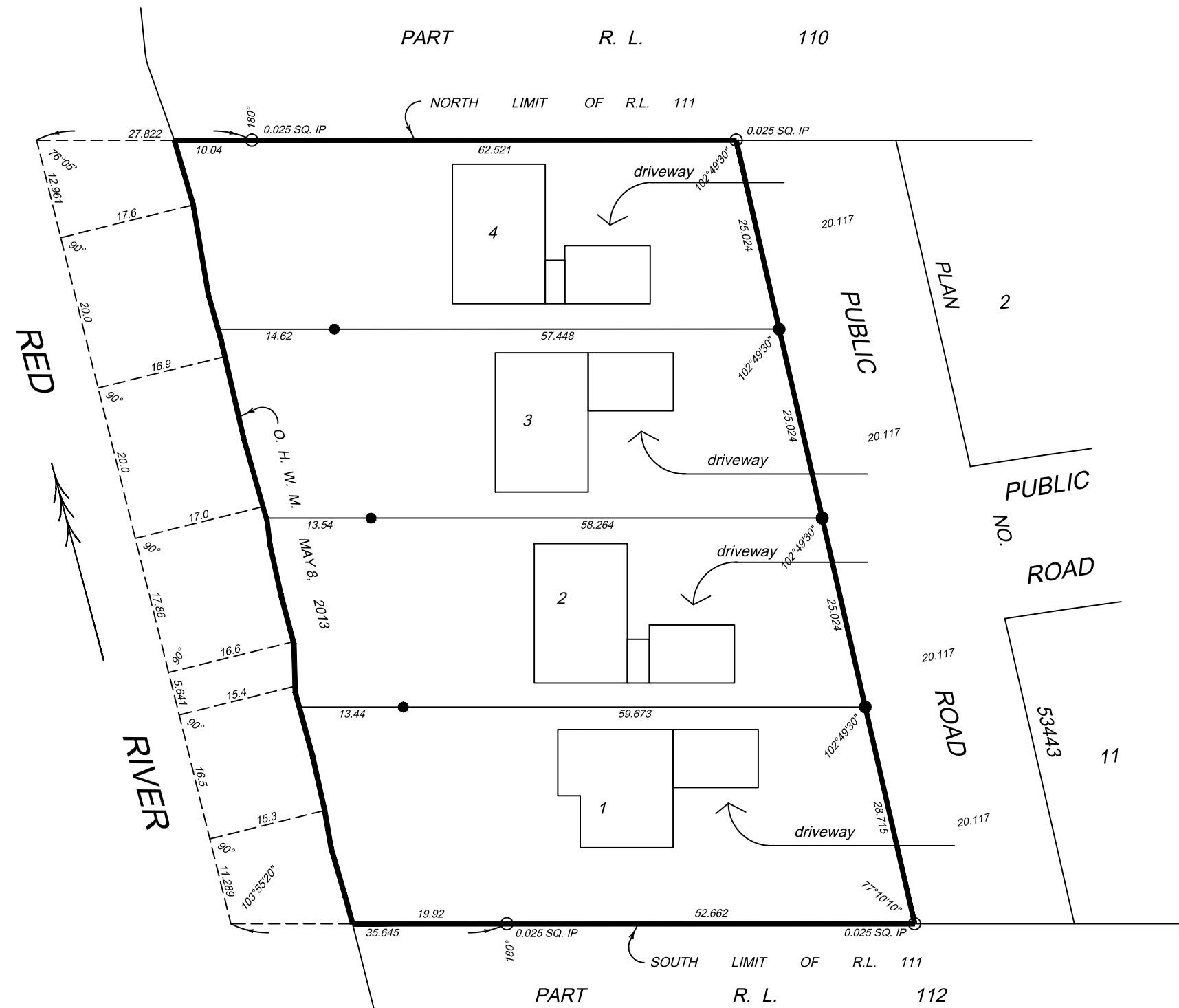
235.6'

82.1'

Mariners Way

2700
Henderson
Highway

S2



TIELMANN DEVELOPMENTS LTD. 4 LOT SUBDIVISION 2700 Henderson Highway	
drawing: proposed driveway location	drawing: D-1
date: June 10, 2013	