

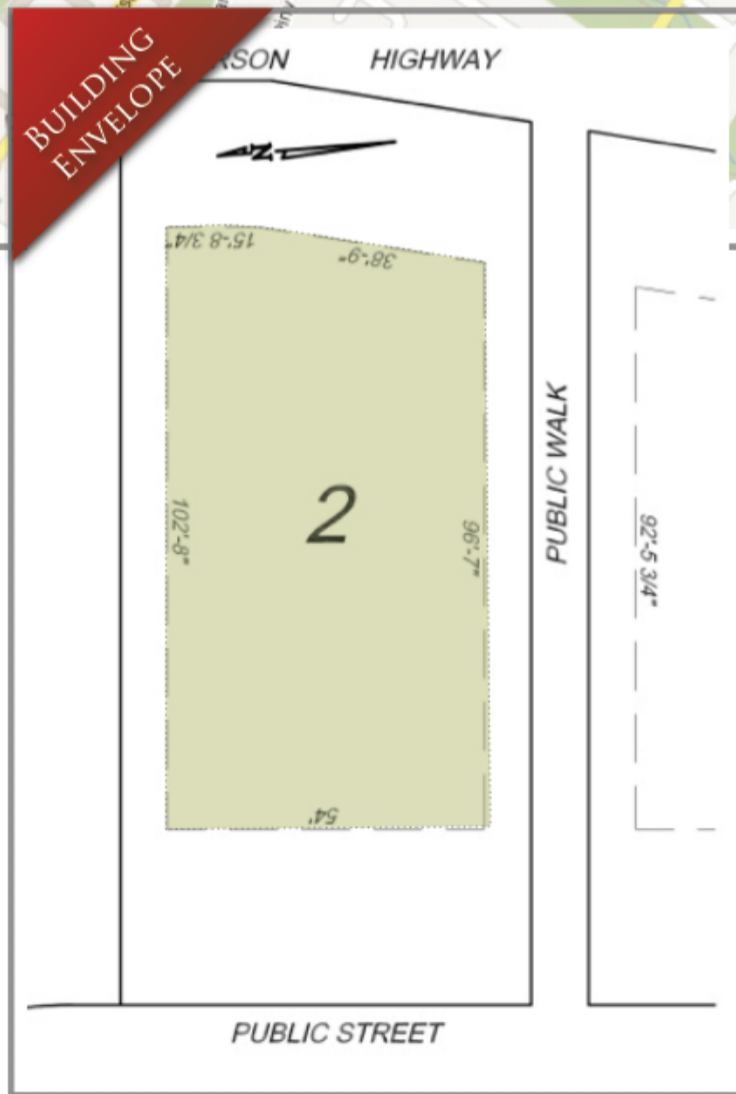
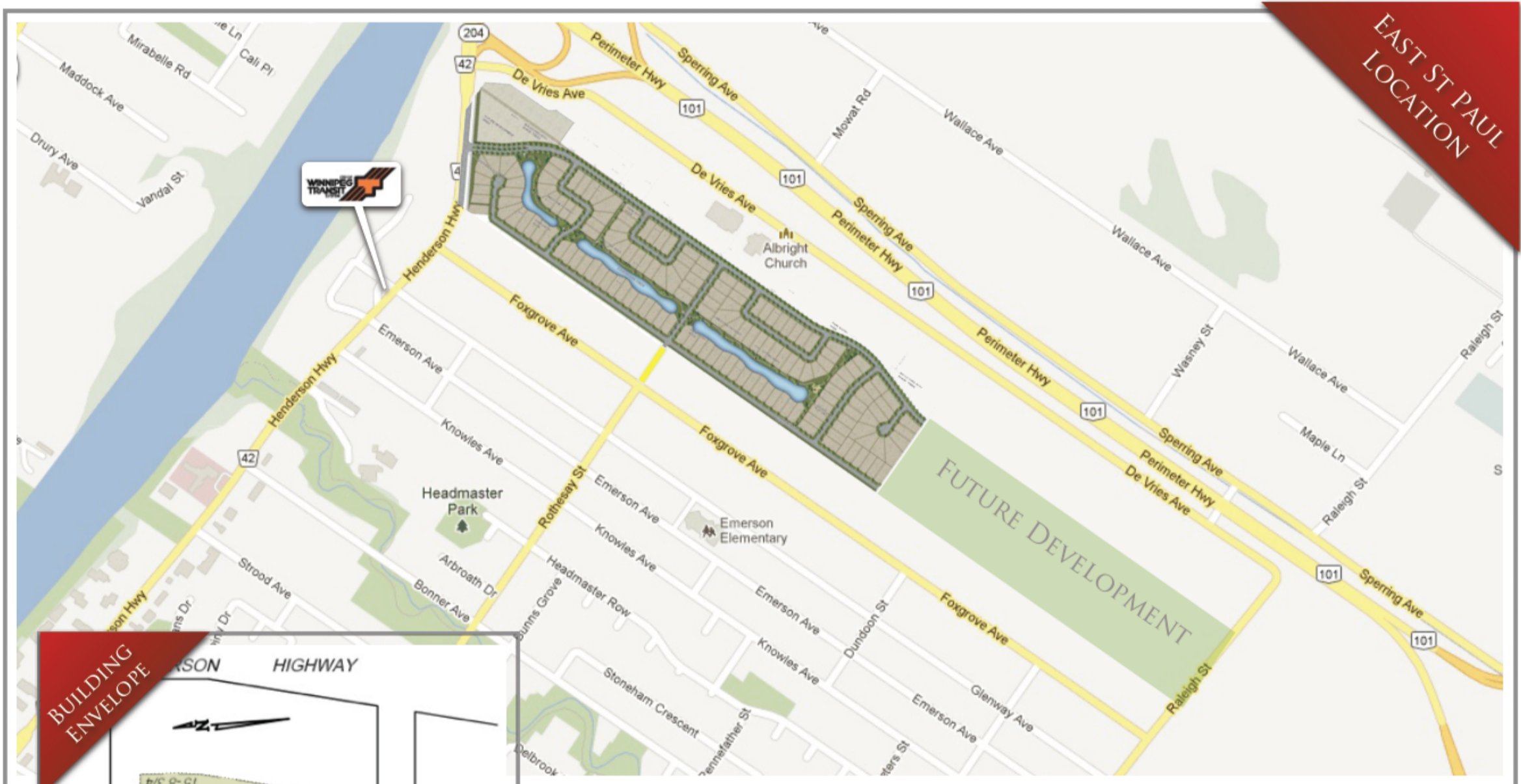
Countryside Crossing

Building Envelopes & Location



An East St. Paul Postal Code

Conveniently located inside the north perimeter, Countryside Crossing boasts the best of both worlds. Large East St Paul lots with easy access to transit service and city amenities. Take a 5 minute walk to the nearest coffee house and riverfront park, or a 5 minute drive to the nearest grocery store and mall. Everything you need is just around the corner...



Building Envelopes

Building envelope are based on 8' Side Yards, 30' Front Yards, and 25' Rear Yard setbacks (except on Corner lots where the Side Yard setback is 12').

Download The Documents

Coming soon

Visit countrysidecrossing.com and download the Sales Agreement, Development Guidelines and Current Lot Availability.